

ISBN- 978-81-9538J7-g.S

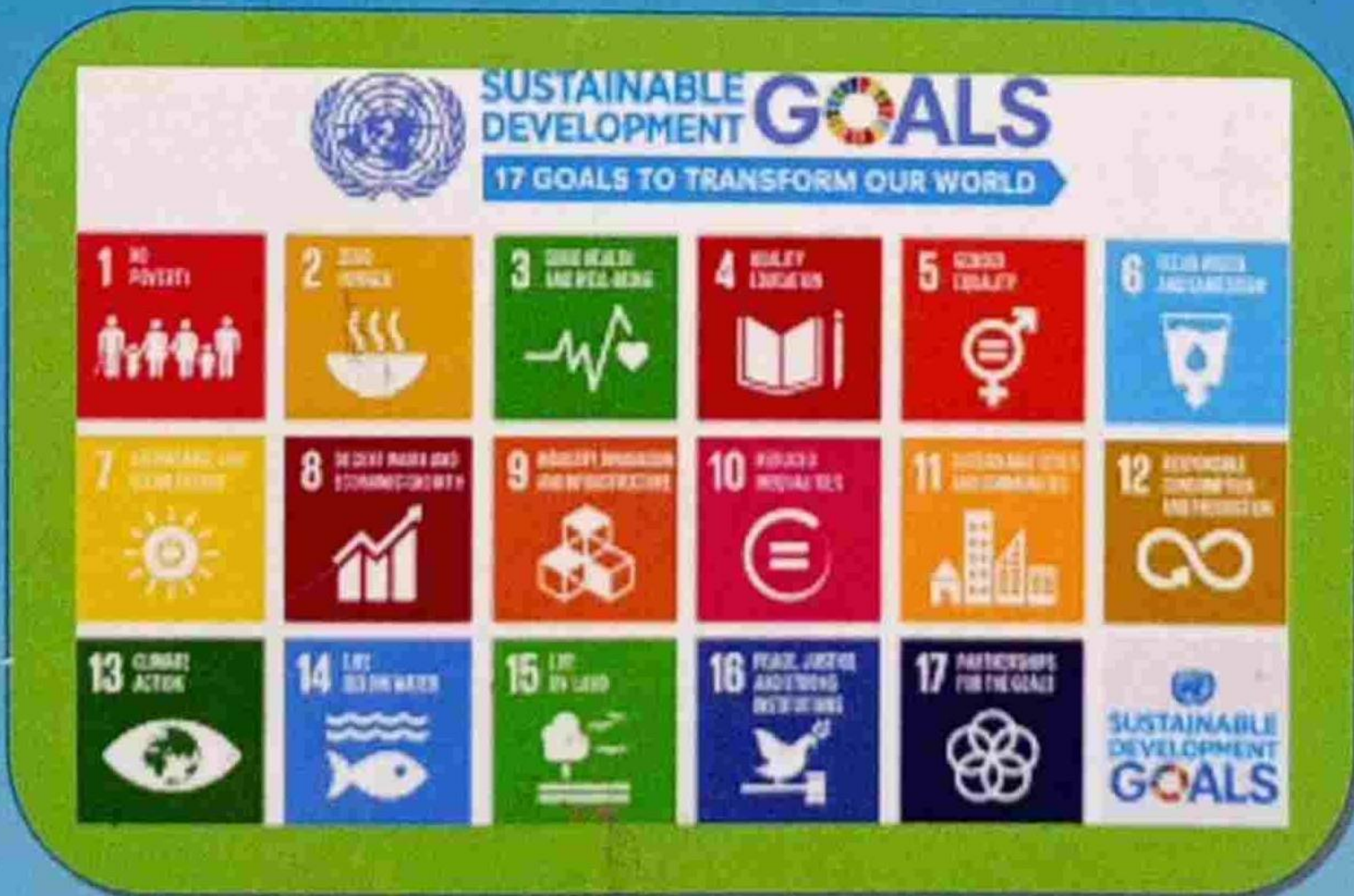
S^{oo}< :^o *^d* *^e ;^o <sup>i . S e<

Industrial Development, Material, Energy and Environment: Key Issues, Opportunities and Challenge

Editors

Mr. Santosh P Mane
Dr. B. M. Bhanje
Dr. F. M. Nadaf
Dr. Sandeep Rout
Dr. Babalola A. Samuel

Dr. Praveen G. Saptarshi
Dr. S. D. Shinde
Dr. H. B. Tipe
Dr. Muhammad Yasir
Dr. Kavitha G. N.



Jyotikiran Publications, Pune
International Publication



[Signature]
Principal

S Kalikadevi Arts, Comm. & Sci. College, Shirur (Ka.), Dist. Beed. er

CONTENTS
Paper Title

Sr. No.	Paper Title	Page No
1	Regional Geographical Analysis of Maharashtra	1-11
2	Use and Application of Nanotechnology in Agriculture	12-16
3	Method for the Eco-friendly Green Synthesis of Silver & Iron Nanoparticles	17-20
4	Sustainable Development and Environmental Issues in India	31-35
5	Geographical Analysis of Maharashtra	14-18
6	Medicinal Plants of Maharashtra	42-44
7	Evaluation of Competence of Employees under the MNCs in Telangana	45-50
8	Conjunction of Jupiter and Saturn on November 21, 2020 at Udaipur, India	51-56
9	Merger and Acquisition of Banks in India	57-59
10	Effect of Intermediary 'Snoil' on Family Population	60-62
11	Financial Resources of Savitribai Phule Pune University: A Case Study	63-66
12	Biological aspect of Boswellia serrata Roxb. An important medicinal Plant	63-70
13		71-75
14	Social Aspect with reference to the Autobiography in entitled Upara by Laxman Mane	76-78
15	Web Portals of Government in India: An Evaluative Study	79-88
16	Product Promotional Planning In Event Management: Current Scenario	
17	Organic Farming: Present Scenario in India	
18	Financial Inclusion of Women: An Implicit Study of Awareness Level of People in Maharashtra	
19	Sustainable Development: Demystifying Malabar Cement And Cement Based Industries In Contemporary Scenario.	
20	A Study On The Role of Trade Unions in Maharashtra's Labour Movement With Reference To The New Labour Party's 2005 Election Manifesto	113-116
21	Sustainable Development Goals (Sdgs) 2030: Challenges, Achievements and Way For India	117-124
22	The Role of Sustainable Agricultural Water Management in India	125-128

JYOTIKIRAN PUBLICATION, PUNE (INTERNATIONAL PUBLICATION)



[Signature]
Principal

Kalikadevi Arts, Comm. & Sci. College, Shirur (Ka.), Dist. Beed.

SUSTAINABLE DEVELOPMENT AND ENVIRONMENTAL ISSUES IN INDIA

Dr. Sanjay Raosaheb Sawate
Associate Professor and Head of Geography, Kalikadevi Arts, Commerce & Science College,
Shirur, Tal. Shirur, Dist. Beed.

*Corresponding Author: Dr. Sanjay Raosaheb Sawate
E-mail- s.r.sawate@gmail.com

Abstract

Development cannot stop for the environment which is decided to stress the choosing of method that would ensure minimum environmental damage. The major concern is to reduce the situation. With the conviction that there is a limit bearing capacity of development, the damage must happen. In developing countries the damage has not been very much, and there is still time to undertake some preventive and corrective measures. The nature of the development and its impact is significant among developing countries but there is a bad impact on the world. Hence, sustainable development refers to development activities that do not impair environmental resources quality. This includes maintaining ecological processes, preserving biodiversity, and protecting species and ecosystems.

Development cannot stop for the environment which is decided to stress the choosing of method that would ensure minimum environmental damage. Con 'iction, susloiiatle Developiaeiit

"Sustainable Development is the development that meets the needs of the present generation without compromising with the needs of future generations." This definition was put forward by the Brundtland Commission in its report "Our Common Future" in 1987. It calls for a concerted effort to build an inclusive, sustainable and resilient ecosystem for the people and the planet. The main features of sustainable development include: increasing per capita income; judicious use of natural resources for future generations.

The basic needs of society, environment and development - which are interrelated and inseparable. Sustainability is a concept that is used in various contexts in the world. The concept of sustainable development is a concept that is used in various contexts in the world. The concept of sustainable development is a concept that is used in various contexts in the world.



JYOTIKIRAN PUBLICATION, PUNE (INTERNATIONAL)

feasible nor desirable, that basic needs for all should be the highest priority of development. And the only protected and carefully nurtured environment could sustain human aspirations. It is commendable that the general feeling today is for preserving the environment for sustainable development which has led to a common understanding in both developed and developing countries in that the environmental concerns should be linked to development strategies.

Objective

1. To understand what is sustainable development
2. To know the sustainable development goal
3. To identify the Environmental issues and how to overcome them

Goals of Sustainable Development

As an affirmative action towards resolving the global environmental crisis that involves global warming, climate change, and ozone layer depletion, the United Nations adopted 17 Sustainable Development Goals (SDG) and 169 targets as part of the United Nations 2030 Agenda.

The 17 Sustainable Development Goals are: 1. End poverty everywhere 2. Ensure healthy lives and promote well-being for all at all ages

Principal

Kalikadevi Arts, Comm. & Sci. College,
Shirur (Ka.), Dist. Beed.

75 Years of Independence «/» India Opportunities and Challenges

75
v Azadiša
Aftiĕit Mahotsav

Chief Editor
Principal Dr. Sarkate S. H.




Principal
Kalikadevi Arts, Comm. & Sci. College,
Shirur (Ka.), Dist. Beed.

12	y - Learning I æd Uf Today'.S Ffiit	!*•. !*r*ka.sh A. •*gtap	120
13	Enigma Inf Survival	Richa Mehta	128
14	Psychological l r.insiti<tl FROED Innnce TO Experience And Identity Crisis As fteft'leclcd In ulkraj /qqq{y5 ('lfffHf€lllJ e	Dr. Grishma Khobragade	435
15	ski:• :=• Agriculur* Tourism Farm Bhenda	Rakh Anan* Maha<Jco Dr. ñ. F. fihuge	140
18	Hralth ytatus Of Women; gg j#uc Of Concern After Post Indcyendcncr	Dr. Cht£ana tSh>SJ fldt\Fao Donglikar	158
17	"fmpacl Gf Fu/iulation Growth In India"	Prof. Dr. .Shankar Laxmanrao fia»arg»nnkar	jgy
18	Impaci Of Mahatma fiandhi's L'nnceylz On FJeital Health	Dr. .Jaycshtiumar R. Bamroliya	jyj
19	'ftole Inf Libraries And Lihrarian In Modern	Mrs. Notitar Ganglia heshrao	180
20	'^'•tu5 III Health And futriiun In InJian .Sucicli"	Mr. Jige .landipan Bxba*»hcb	jgg
21	Relation Between Setthments And Ffiyz'ca'I Elcm»iiu Crtgifa) Review tn gg\$@	Dr. Sanjay Raoisheb Siwate	219




Principal

Kalikadevi Arts, Comm. & Sci. College,
Shirur (Ka.), Dist. Beed.

Relation Between Settlements And Physical Elements: Critical Review In Beed

Dr. Sanjay Raosaheb Sawate

Associate Professor & Head Dept. of Geography, Kalikadevi
Arts, Commerce & Science College, Shirur Kasar Tq. Shirur
Kasar, Dist. Beed.

Abstract:

Settlement is an abode, a shelter or dwelling where man retires from his days work to sojourn or sleep. It is an establishment that relates to and results form an established way of life. Settlement is a fixed point in space and has definite location and identify. Thus the term settlement means the characteristic grouping of population into occupational unites together with the facilities in the form of houses and streets which serve the inhabitants. According to Singh settlement as occupancies unit represents, thus an organized colony of human being, including the buildings in which they live or work or store or use them otherwise and the tracks or streets over which their movements take place. In the earlier stages settlements totally depend upon the surrounding conditions. Settlements then gradually change due to advancement of knowledge and civilization. Rural settlements are also studied by sociologists, economists and historians but their approaches are different. Geographers study the problem as manmade habitat on the earth's surface in relation to the environment.

Keywords: Settlement, Dwelling, Civilization Rural Settlements etc.




Principal
Kalikadevi Arts, Comm. & Sci. College,
Shirur (Ka.), Dist. Beed.

75 Years of Independence of India Opportunities and Challenges



75
Azadi Ka
Amrit Mahotsav

Chief Editor
Principal Dr. Sarkate S. H.




Principal
Kalikadevi Arts, Comm. & Sci. College,
Shirur (Ka.), Dist. Beed.

Use Of Remote Sensing Techniques In Land Use Planning In Latur District

Dr. Sanjay Raosaheb Sawate

Associate Professor & Head Depart of Geography Kalikadevi Art's, Commerce & Science College Tq. Shirur Kasar Dist. Beed (M.S.)

Abstract

This era is technological era every aspect or field is used technology at various level. Remote sensing has been of vital importance in landform studies as it has been used as data collection and analytical tool that provides synoptic views of a terrain, which is not possible to obtain in field and from conventional tools. The study of landforms analysis around Latur will be carried out in laboratory by using land sat falls colour composite and black and white band 4, 5 and 7 imagery on 1: 250,000 scale supplemented with toposheets. The delineation of landforms will substantiated by using morphometric techniques viz. Serial profile, superimposed profiles and composite profiles across the study area. In subsequent phase, the interpreted and delineated landforms were verified and confirmed in field during the period of field work. In third stage, the imagery will be reexamined in laboratory and the information will revised. The map and plans were redrawn. Land sat imagery and toposheets were chief tools used in present study of landuse.

Key Words – Remote Sensing, data collection, landforms etc.

Introduction

Land use means use of land in different sector in that agriculture is one of the oldest economic activities

of man. Generally, it is understood to mean both, cultivation of food and fiber crops and the raising of livestock. It has remained an important source of livelihood even today over the years in spite of growing industrialization and urbanization in the world and nearly 50% working population is still engaged in agriculture. In the developing countries, agriculture sector has been a principal source of employment and largest portion of income. However, it provides raw material to industry and much of export items. Agriculture in India is a major source of economy. It contributes 50% to national income and gives direct employment to about 68% of total population and nearly 90% population to rural area and provides nearly 35% of country's export, besides, supplying of wage goods required the non-agricultural section in industry. Hence it is not surprising that agriculture in India has been receiving much attention in the sectoral allocation of inputs in the five year plans in India and therefore top priority has been assigned to develop agriculture sector in our country.

Study Area :

Latur district is selected as a study region. The District of Latur lies between 17⁰12' to 18⁰50' North latitudes and 76⁰12' to 77⁰18' East longitudes. It is surrounded by Beed and Parbhani district in the north, Nanded district in the North-East, Karnataka State in the South-East and Osmanabad district in the West and North-West.

The Latur district has an area of 7372 (7371.9) sq. km. and population 2454196 as per 2011 census. Out of the total population of the district male and female population were 1273140 and 1181056 respectively.




Principal

Kalikadevi Arts, Comm. & Sci. College,
Shirur (Ka.), Dist. Beed.

FRONTIERS IN BIOLOGICAL SCIENCES



Dr. S. G. Yadav




Principal
Kalikadevi Arts, Comm. & Sci. College,
Shirur (Ka.), Dist. Beed.

9. TAXIMETRIC STUDY OF THE GENUS CASSIA FROM
MAHARASHTRA, INDIA
Minakshi Mahajan (154)
10. HEAVY RAINFALL AND GLOBAL WARMING INCREASES
WATERBORNE DISEASE
Rajesh B. Desai (169)
11. CHANGES IN THE PROTEIN CONTENT IN FRESHWATER
BIVALVE AFTER ACUTE TOXICITY TO CADMIUM DURING
SUMMER SEASON.
Shaikh Yasmeen and T. S. Pathan (185)
12. MUTATION BREEDING: A NOVEL APPROACH FOR PLANT
IMPROVEMENT
K. D. Savant (198)
13. PHOSPHATE SOLUBILIZING MICROORGANISMS (PSMS) AS
BIOFERTILIZERS: AN APPROACH FOR SUSTAINABLE
DEVELOPMENT IN AGRICULTURE
Sanjay M. Dalvi, Laxman S. Raut and Ravindra R. Rakh (207)
14. MINERALOGY ON THE BASIS OF PETROGRAPHIC STUDY OF
LATERITES AND BAUXITES OF SHAHUWADI TALIKA OF
KOLHAPUR DISTRICT, MAHARASHTRA.
J. V. Khanapurkar, R. A. Suryawanshi, S. V. Pathare (231)
15. ANTIFUNGAL ACTIVITY OF PLANT EXTRACT AGAINST
DOMINANT SEED-BORNE STORAGE FUNGI OF SOME OIL
SEEDS
Sarkate P.S and Badar K.V (258)
16. APPLICATION OF DOMESTIC WASTE IN BIOGAS PRODUCTION
Sanap S.B. and Chavan S.P. (271)
17. MEDICINAL IMPORTANT AND NUTRITIONAL POTENTIAL
OF SOME WILD LEAF VEGETABLES IN MARATHWADA,
MAHARASHTRA.
Survase S. A. and B. P. Sarwade, (281)
18. STATUS OF OXYGEN LEVELS IN KALOOR LAKE
Patwari J.M and Narkhede R.K. (297)




Principal

Kalikadevi Arts, Comm. & Sci. College,
Shirur (Ka.), Dist. Beed.

CHANGES IN THE PROTEIN CONTENT IN FRESHWATER BIVALVE AFTER ACUTE TOXICITY TO CADMIUM DURING SUMMER SEASON.

Shaikh Yasmeeen* and T. S. Pathan

*Department of Zoology, Dr. Rafiq Zakaria College for Women Aurangabad (M.S.) India

Department of Zoology, Kalikadevi Arts, Commerce and Science College, Shirur (Ka), Dist. Beed (M.S.) India

Corresponding author: shaikhyasmeeen7862@gmail.com

ABSTRACT - The present study has been undertaken to investigate, the effect of acute toxicity effect of cadmium chloride on protein content in different body parts of a freshwater Bivalve Mollusks, *Lamellidens marginalis* for 96 hours. The disturbance in the protein is one of the outstanding biochemical lesions due to the action of Cadmium. There is significant decrease in protein in different body parts after exposed to lethal concentration of cadmium under stress condition. Thus, the changes in protein contents can be used for early diagnosis of stress or as a probable biomarker for assessment of cadmium metal pollution in aquatic ecosystem.

Key words: Lethal concentration, Cadmium Chloride, protein, *Lamellidens marginalis*.



FRONTIERS IN BIOLOGICAL SCIENCES



Dr. Yadav S.G. (M.Sc., Ph.D., F.I.A.S.I., F.S.I.Sc.)
Working as an Assistant Professor and Head
Department of Botany, Shivaji Mahavidyalaya
Renapur Dist. Latur (M.S.) since 2011. He was
awarded by Ph.D. degree in Taxonomy of
Algae in 2010 by Dr. Babasaheb Ambedkar
Marathwada University Aurangabad. He is
recognized research supervisor of Swami
Ramanand Teerth Marathwada University,
Nanded and two research students are
pursuing Ph.D. work under his guidance. He
has published 90 research papers in reputed
International and National Journals. He has
presented 48 research papers in
International/National Conferences. He has
published two books of his own and edited
one book. He is a member and fellow of
various scientific societies. His area of research
interest are Taxonomy, Phycology,
Aerobiology, Environmental Biology and Plant
Pathology.



A handwritten signature in blue ink, appearing to be 'S. G. Yadav', written over the word 'Principal'.

Principal

Kalikadevi Arts, Comm. & Sci. College,
Shirur (Ka.), Dist. Beed:

Xpress publishing
AN IMPRINT OF NOTION PRESS

Price: Rs. 375.00
ISBN: 979-888629608-2



9 798886 296082

Sustainable Development for Future: "Insights from agriculture, Health, Aquaculture Energy, Education and Environment"



Editors

DR. SANTOSH V. RANHA
DD, SHIRUR

PROFESSOR | ORYASIN' EENBHALKH
DR. ATUL K. GADGADR. COURPAGAR

Scanned with OKEN Scanner




Principal
Kalikadevi Arts, Comm. & Sci. College,
Shirur (Ka.), Dist. Beed:

****able DeYeIopmegn
or Future:
“Insights IFOlll agricultui'e, H,ealth,
Aquaculture, Energy, Education and
Environment”**

Editors

Dr. Santosh V. Rankhamb

(M.Sc. Ph.D., F. A.Z.I., F.I.A.R.A.)

Assistant Professor & Head, Department of Zoology,
Late Ramesh Warpudkar Arts, Science and Commerce College, Sonpeth
Dist. Parbhani (M.S.), INDIA.

Prof. S. S. Yashwantrao

(M.Sc. Ph.D., F. S. L. Sc., F. A.Z.I., F. G. E. G. A., M. Z.S.I., F. A. B. R. F., F.I.S.R.O.S.E.T,
s e n t, t i n

Department of Zoology,
Dr. Refiq Zulkarnain College, Woinen, Avmngabad (bEfi), 'I2tD1A-

Dr. T. S. Pathan

t u b . n h : b . r . M L , F . r . s . s , ' z , P . j . r J

Assistant Professor & Head, Department of Zoology,
Kalikadevi Arts, Science and Commerce College, Shirur Kasar, Dist. Beed

Dr. Atulkumar R. Chourpagar

(M.Sc. Ph.D., P.G.D.F.Sc., F. A.Z.I., M. Z.S.I.)

Assistant Professor & Head, Department of Zoology,
Dadapatil Rajale Arts, Science and Commerce College, Adinathnagar,
Tal. Pathardi, Dist. Ahmednagar (M.S.), INDIA

scanned with: OKEF4 Scanner




Principal

Kalikadevi Arts, Comm. & Sci. College,
Shirur (Ka.), Dist. Beed:

NOTION PRESS

India, Singapore, Malaysia.

Published by Notion Press 2021
Copyright © Authors, 2022
All Rights Reserved.

ISBN 9798885218993

Author of this book is solely responsible and liable for the content, accuracy, and reliability of the information, data, and statistics provided in this book. The publisher, editor, and printer do not accept any liability for any errors, omissions, or damages of any kind, including without limitation, indirect or consequential loss or damage arising out of use, inability to use, or about the reliability, accuracy, or completeness of the information, data, and statistics provided in this book.

5ce*lned ywith OKEN š r o n «




Principal
Kalikadevi Arts, Comm. & Sci. College,
Shirur (Ka.), Dist. Beed.

Dr. Santosh V. Rankhamb (M.Sc., Ph.D., F.A.Z.I., F.A.B.R.F., F.I.S.R.O.S.E.T.) is working as an Assistant Professor and Head in the Department of Zoology, Late Ramesh Wargudekar Arts, Commerce and Science College, Sonpeth, Dist. Parbhani, Maharashtra and has teaching and research experience of more than 11 years. He did his M.Sc. and Ph.D in Zoology from Dr. Babasaheb Ambedkar Marathwada University, Aurangabad (Maharashtra). He has 16 International and National peer-reviewed papers and 02 books to his credit. His present research interests are polyphages taxonomy



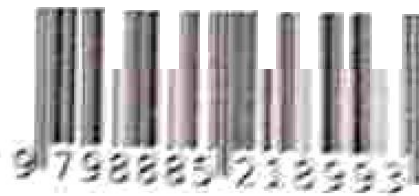
Professor (Dr.) Shaikh Yasmeen (M.Sc., Ph.D., F.S.L.S., F.A.Z.I., F.I.S.R.O.S.E.T., M.Z.S.I., F.A.B.R.F., F.I.S.R.O.S.E.T.) is working as an Assistant Professor in the Department of Zoology, College for women, Aurangabad (M.S.) India. She is M.Sc. and Ph.D in Zoology from Dr. Babasaheb Ambedkar Marathwada University, Aurangabad (M.S.) India. She has published more than 25 research papers in reputed international journals including Science Direct (SCI & Web of Science). Her main research work areas are Toxicology, Animal Physiology and Histopathology. She has 12 years of teaching experience and 25 years of research experience. 100 students are awarded Ph.D. degree under her guidance and 08 registered. She has completed Major Research Project funded by UGC New Delhi and Minor Research project and ongoing minor research project from Dr. Babasaheb Ambedkar Marathwada University Aurangabad.



Dr. Pathan T.S. (M.Sc., Ph.D., F.A.Z.I., F.A.B.R.F., F.I.S.R.O.S.E.T.) is working as a Assistant Professor and Head in the Department of Zoology, Kalikadevi Arts, Commerce and Science College, Shirur Kasar Dist. Beed, Maharashtra and has teaching and research experience of more than 11 years. Dr. Pathan did his M.Sc. and Ph.D in Zoology from Dr. Babasaheb Ambedkar Marathwada University, Aurangabad (Maharashtra). He has 40 International and 06 National peer-reviewed papers and 05 books to his credit. His present research interests are fish biology



M.Z.S.I. is working as an Assistant Professor in the Department of Zoology, Kalikadevi Arts, Commerce and Science College, Admathnagar, Tal. Pathardi, Dist. Ahmednagar, Maharashtra and has teaching and research experience of more than 09 years. He did his M.Sc. and Ph.D in Zoology from Dr. Babasaheb Ambedkar Marathwada University, Aurangabad (Maharashtra). He has 12 International and 04 National peer-reviewed papers and 01 edited books to his credit. His present research interests are Aquatic pollution and freshwater fish biology



Scanned with OKE4 Scanner




Principal
Kalikadevi Arts, Comm. & Sci. College,
Shirur (Ka.), Dist. Beed.

Time line of Intha 1994

Honorable Pamulaparthi Venkata Narasimha Rao was an Indian lawyer and politician who served as the 9th Prime Minister of India. He had taken a lot of decisions for the welfare of the Nation. As a part of this, in 1994 his government has made the 76th amendment in constitution. It relates to the reservation of seats in educational institutes and of appointments of posts in the services under a state, for backward classes, scheduled castes and scheduled tribes. As per the decision of hon. Supreme Court on 16th November 1992, total reservations under Article 16(4) of the Constitution should not exceed 50 percent.

There have been 105 amendments in the Constitution of India up to October 2021. The first amendment was done in 1950. After that, the Constitution has been amended 104 times. This is

Education

After the independence of India in 1947, the government of India established different educational institutes to face the various educational challenges and recommended comprehensive policies to improve the educational policies in India.

For this the Indian government had established the commissions and reforms, mainly University education commission, Murlidhar Commission (1952 – 53), Kothari Commission (1966 – 66) to apply the various education policies like national education policy (1968), National Policy of education (1986), Teachers education Scheme (1987), Operation Blackboard (1994) etc. The government has taken great efforts for the improvement of the education system, the infrastructure and the enrolment of the rural peoples in the Primary educational flow as a result the government had invented the District Primary Educational Program (1994).

In India government launched the centrally sponsored scheme of the District Primary Educational Program (DPEP) as a measure initiative to revitalize and achieve the goal of **Universalization of Primary Education**.

In this project, 85% of the project cost was shared by the government of India while 15% by the concerned State. The central share was funded by several external agencies including the World Bank; US and Dzpanoecat of&azlatioal :.elopment




Principal
Kalikadevi Arts, Comm. & Sci. College,
Shirur (Ka.), Dist. Beed:

National Immunization Days (NIDs) for poliomyelitis eradication in India were conducted on 9th December 1993 and 20th January 1996

Some Important events

On 26th January 1994, India rolls out the short-range Prithvi missile at Republic Day Parade in New Delhi.

On 20th May 1994, Sushmita Sen was crowned Miss Universe in Manila, Philippines.

On 19th November 1994, Aishwarya Rai was crowned Miss World in Sun City, South Africa.

India participated in the 1994 Asian Games held in Hiroshima, Japan from 2nd to 16th October, IN 1994. India won 3 silver medals and 13 gold medals at the final.

Now a days India has made drastic improvement in the performance of all the sectors. It is really proud fill moment for Indians. Progress is a continuous, everlasting and life long process which is to be achieved by Research.



Author of this article, Dr. Sanjay K. Tupe has worked as a Jr. Lecturer of Physics in Kalikadevi Junior College for 13 years 26 days. Now he is working as an assistant Prof. and head department of Physics since 2011 in Kalikadevi senior College, Shirur (K.), Dist. Beed, Maharashtra, India. He is also working as Research guide for research Scholars in Dr. BAMU, Aurangabad, M.S. India. He worked as an in charge principal for more than three years. He has also worked as a Vice Principal for five years.



A handwritten signature in blue ink, appearing to be 'S. K. Tupe'.

Principal
Kalikadevi Arts, Comm. & Sci. College,
Shirur (Ka.), Dist. Beed.

ELT Voices

International Peer-Reviewed Journal

Volume 11, Issue 2 | ISSN 2230-9136

Published by International Society for Educational Leadership (ISEL)

we.city.oices:com | .worry.isel:.educati.on

liiddliist Cultural Sttidies and Literal@re in Modern ludia

Dr. waive jabhau.'nbb'sgaarao..

Assistant Professor, Department of English, Kalikadevi Arts, Commerce and Science College Shirur (Kasar), Beed

Buddhism is a great philosophy and it is the third-largest religion in the world. Approximately 600 million followers and 8% of the global population are known as Buddhists. Buddhist ideology and teaching are based on originality it is traditions, beliefs, and spirituality totally based on Buddha's teaching. It originated in ancient India as a Sarmana tradition sometime between the 6th and 4th

enlightened being who taught others the means by which they could escape samara, the cycle of suffering, rebirth, and death. Gautama Buddha has developed Buddhism and he taught Buddhism to all over the world. It was very much flourished in the period of king Ashoka. Buddhism was thought in many schools during the period of Buddha. It was only one religion that could become the world's no one religion. It is a very great religion in the world it is not a killer but a savior. It remained a relatively minor school until the reign of Ashoka the Great (268-232 BCE) of the Mauryan Empire (322-185 BCE) who embraced and spread the belief, not only throughout India, but through Southern, Eastern, and Central Asia.



A handwritten signature in blue ink, appearing to be "Dr. Waive Jabhau".

Principal

Kalikadevi Arts, Comm. & Sci. College,
Shirur (Ka.), Dist. Beed.

Peer reviewed Journal

Impact Factor: 7.265

ISSN-2230-9578

Journal of Research and Development

A Multidisciplinary International Level Referred Journal

September 2021 Volume-12 Issue-6

CHANGING PERSPECTIVES OF EDUCATION

Chief Editor

Dr. R. V. Bhole

'Ravichandram' Survey No-101/1, Plot
No-23, Mundada Nagar, Jalgaon.

Executive Editors

Dr. Deepa B. Kshirsagar

Principal

Sow. Kasharbai (Kahu) Sonajirao Kshirsagar
College Beed.

Executive Editors

Dr. Sanjay K. Tupa

IC Principal

Kalikadevi Arts, Commerce & Science College,
Shirur (Ka.) Tq. Shirur (Ka.) Dist. Beed

Co- Editors

Dr. Donglikar C.V.

Dr. Korde R.C.



International Journal of Research and Development



Address

'Ravichandram' Survey No-101/1, Plot,
Mundada Nagar, Jalgaon (M.S.) 425


Principal

Kalikadevi Arts, Comm. & Sci. College,
Shirur (Ka.), Dist. Beed.

Journal of Research and Development

A Multidisciplinary International Level Referred and Peer Reviewed Journal

4th September 2021 Volume-12 Issue-6

EDUCATION

Chief Editor

Ravi K. Survey No-101/1, Plot
No-23, Mundada Nagar, Jalgaon

Executive Editors

Dr. Deepa B. Kshirsagar

Principal

Sonw. Kesharbai (Kaku) Sonajirao Kshirsagar
College Beed.

Executive Editors

Dr. Sanjay K. Tupe

IC Principal

Kalikadevi Arts, Commerce & Science College,
Shirur (Ka.) Tq. Shirur (Ka.) Dist. Beed.

Co-Editors

Dr. Donglikar C.V.
Dr. Korde R.C.

Published by- Dr. Deepa B. Kshirsagar, Principal, Sonw. Kesharbai (Kaku) Sonajirao Kshirsagar College Beed.

The Editor is not responsible for the content of the articles published in the journal. The author shall be solely responsible for the originality and thoughts expressed in their papers.

All rights reserved with the Editors



Principal

**Kalikadevi Arts, Comm. & Sci. College,
Shirur (Ka.), Dist. Beed.**

CONTENTS

1	The Challenges of Online Teaching and Learning While Pandemic In Present Era	Dr. Mohammed Ajaz Sheikh	1-3
2	Role of Moral Education in Education System	Dr. Abhay Balbhim Shinde	
3	Education for Entrepreneurship Development	Dr. Anita Madhusudan Shelke	
4	A New Dimension of Education- Online Education, Advantages and Challenges for Teachers and Students	Prof. M. D. Wanjare, Prof. P S. Giri	9-11
5	Role of Moral Education in Children: A Survey	Mrs. Borivale M. P.	12-13
6	Educational Problems among Students and Role of Teacher and Counselor	Dr. Sunita Watore, Savita S. Manohar	14-16
7	Environment degradation during Festivals, due to Lack of Environment Education	Pratibha Agharde	17-18
8	Potential of Research in Higher Education	Kirti R Desai, Sunita S Bhosle, Smita G Basole, Pradnya R Mahismalkar	
9	Importance and Challenges of Environmental Education in India	Dr. Shama B. Lomate	
10	Effect of Corona Period on Health	Maya Sanjay Khandat	
11	Gender Equity in Education	Dr. Ayodhya Pawal	
12	Gender Equality through Education	Dr. Varsha Kulkarni	31-33
13			34-37
14	Innovative Teaching for Effective Curriculum Delivery: A Case Study	Jadhav	38-42
15		Dr. S. K. More	43-44
16			45-47
17		Dr. Gaitwad D. S.	48-50
18	Online or Offline: A survey	Pankaj Ghodke, Narsing Gawali, Anil B. Bagul, Dr. S.S. Hussaini	51-59
19	Geographical Analysis	Dr. Gaitwad D. S.	60-64
20	Mobile Information Literacy for Users	Dr. Sunil Ashurba Mutnale	65-69
21	Education	Mrs. Neelam Ait Sarwade	70-71
22	Role of Comma		72-74
23	A Study Of Qualitative And Quantative Analysis Of Zooplankton Diversity Of Mula Reservo Maharashtra	Dr. Ahar Y. D.	
24	Role of Agro-Tourism in Socio Economic Development of the South Konkan	Dr. Sudhir A. Vavle	79-81
25	Need of Environment Education in Current Scenario	Dr. Jyoti J. Kshirsagar	82-85
26	Online Classes - Requisite in School Education	Smita Basole, Sunita Bhosle and Kirti Desai	86-88
27	Empowering Adolescents through Life Skill Education	Dr. Chetana Vishwanathrao Donglikar	89-91
28	The Role of Language in Education	Dr. Rajabhan Chhazanrao Korde	92-97
29	शास्त्रे वा. पारपाम		
30	ऑनलाइन शिक्षण वा. पारपाम		



(Signature)
 Principal
 Kalikadevi Arts, Comm. & Sci. College,
 Shirur (Ka.), Dist. Beed.

The Role of Language in Education

Dr. Rajabhau Chhaganrao Korde

Assistant Professor & Head Department of English

Kalikadevi Arts, Commerce and Science College Shirur (Kasar) Dist. Beed

Email: rajkorde7@gmail.com Mob: 9881417765

Abstract: It is obvious that languages play an important role in various aspects of our daily lives. Their role is not only limited to communication, rather it extends into the vast branches of knowledge and human sciences. Languages are capable of developing human knowledge and extending it for the benefit of human kind this research aims to identify a scientific methodology in the field of linguistics (living languages) which will assist researchers in determining the most expressive language in delivering knowledge and scientific facts - a language that is powerful, expressive, and influential. Despite the recognition of the importance of languages and their role in education, not much research has been done to investigate the various issues pertaining to this matter. True, studies on the relationship between languages and knowledge exist, but there are few that elaborate upon the effects of languages on education. The following research attempts to present a foundational presentation of the effects of languages in educational development and how the positive effects may be incorporated towards the development of human resources.

Developing strong reading skills is essential to children's academic success and later life outcomes. Learning to read in a language that they use and understand—whether it's spoken or sign language—is one of the most critical factors in determining whether children develop the strong literacy skills that are foundational for all later learning. Even the most carefully designed reading lessons won't help children learn to read if they can't understand the language their teacher uses in the classroom. This is why language of instruction policies and practices are critical to learning and improving children's reading outcomes—and why we're sharing two useful resources for addressing language issues in literacy programs and policies. (1)

In discussions of language and education, language is usually defined as a shared set of verbal codes, such as English, Spanish, Mandarin, French, and Swahili. But language can also be defined as a generic, communicative phenomenon, especially in descriptions of instruction. Teachers and students use spoken and written language to communicate with each other—to present facts, engage in learning processes, present academic content, assess learning, display knowledge and skill, and build classroom life. In addition, much of what students learn in school (academic written language), and they learn the relationship between language and literacy's). Both definitions of language and education.

As suggested by M. A. K. Halliday, the relationship between language and education can be divided into three heuristic categories (2)

Learning Language:

In their early years, children are learning both spoken and written language. They are developing use of complex grammatical structures and vocabulary; communicative competence (rules for the appropriate and effective use of language in a variety of social situations); comprehension of spoken and written language; and ways to express them. Educational programs for young children often emphasize curriculum and instruction to facilitate language learning. With regard to spoken language, instructional programs may emphasize opportunities to comprehend a variety of genres from directions to narratives and opportunities to experiment with modes of expression. With regard to written language, classrooms for young children provide opportunities to learn alphabetic symbols, grapho-phonemic relationships (letter-sound relationships), basic sight vocabulary, and comprehension strategies; and also feature the reading of stories designed for young children. Young children may also have opportunities to learn how to express themselves through written language, including opportunities to form letters, words, sentences, and text structures, and opportunities to learn how to put together a written story.

There is debate about the extent to which classrooms for young children's language learning should focus on written language. Some argue that young children should focus on spoken language and that written language should be introduced later. Others argue that young children should focus on written language and that spoken language should be introduced later. The research suggests that a balanced approach is best, one that provides opportunities for children to learn both spoken and written language. This can be achieved by providing opportunities for children to engage in both oral and written language activities. For example, teachers can provide opportunities for children to engage in oral language activities such as storytelling, role-play, and group discussions. They can also provide opportunities for children to engage in written language activities such as drawing, writing, and reading. By providing a balanced approach, teachers can help children develop the language skills they need for academic success and later life outcomes.




Principal

Kalikadevi Arts, Comm. & Sci. College,
Shirur (Ka.), Dist. Beed.

KCSL's International Journal of Social Sciences & Humanities

An International Peer Reviewed Journal

April - 2022

Vol. I No. 22

Editor-in-Chief

Dr. Sriailili Priya Ailam

Assistant Professor & Head Dept. of English,
Lohans' EM-ation. Sacin: 'sAxiñ fi Settee Uollee,
AieOrñsafiad tã4S)



EXCEL PUBLICATION HOUSE
AURANGABAD




Principal

Kalikadevi Arts, Comm. & Sci. College,
Shirur (Ka.), Dist. Beed:

CHIEF EDITOR,
(SPECIAL ISSUE)

Dr. Shaikh Parvez Aslam
Assistant Professor & Head, Dept. of English,
Lokseva Education Society's Arts & Science College

EDITORIAL BOARD

Dr. Liyakat Shaikh
Principal
Lokseva Education Society's
Arts & Science College,
Aurangabad

Dr. Nfelirunnisa Pathan
Director
Tarabai Shinde Women's Study Centre
Dr. BAMU,
Aurangabad

Dr. Nilanisha-Bhise
Assistant Professor Dept. of English,
Lokseva Education Society's Arts &
Science College,
Aurangabad

Ms. Ashwini More
Assistant Professor,
Tarabai Shinde Women's Study Centre
Dr. BAMU,
Aurangabad



EXCEL PUBLICATION HOUSE
AURANGABAD




Principal
Kalikadevi Arts, Comm. & Sci. College,
Shirur (Ka.), Dist. Beed.

CONTENTS

Construction of Subversive Black Motherhood: Ruptured Motherline in <i>God Help the Child</i> Dr. Sreebitha P.V	Dr. Rafseena M	1
Portrayal of the Feminine in the Poems of Nissim Ezekiel Zeenat B. Merchant		
Women Education-A Foundation Stone for the Emancipation & Empowerment Dr. Jyoti Mahanta		
A Silent Sufferer in Shashi Deshpande's <i>That Long Silence</i> Patil Jayshree Ramdas	Dr. Dahale Naresh Madhavrao	10
Shaikh Zeba Farheen	Dr. Farhat Durrani	f2
Education and Women empowerment: A study in <i>Inside the Haveli</i> Dr. Nilofer Shakir		14
Feminine Sensibility in Kamala Markandaya's <i>Two Virgins</i> Dr. Manish Nayak Bhise-		16
Cultural Feminism Chincholikar Bandopant Babarao		
Communal Harmony in Anita Desai's <i>Clear Light of Day</i> Dr. Bul Basib Siddiqi		30
Depiction of Women in Literature with Reference to Selected Diasporic Writers Dr. Pramod Machhindra Nile		22
Woman and Society in Shakuntala Bharvani's <i>Lost Directions: A Feminist Perspective</i> Dr. Khan Mahbub Afzal		
Feminine Discourse in Anita Desai's <i>Fire on the Water</i> Dr. Deetendia Zgorao'Deshmukh		27
A Comparative Analysis of Digital Transformation in Global Higher Education Shaily Vinai Asthana	Vishwas Iresh Swami	
Women Exploitation in Civil War: A Study of Nayomi Munaweera's <i>Island of a Thousand Mirrors</i> Dr. Rupali Prabhakar Palodkar		32
Feminine Discourse in Anita Desai's Fiction Dr. Subhash Sampat Waghmare		34
The Portrayal of Women: A Study of Gabriel Garcia Marquez's <i>One Hundred years of Solitude</i> Dr. Khan Ansarullah Shafiullah		36
Female Solidarity by Toni Morrison in <i>Beloved</i> Dr. Swapna C. Vyawahare		39




Principal

Kalikadevi Arts, Comm. & Sci. College,
Shirur (Ka.), Dist. Beed.

Representation of Indian Women in Movies Dr. Deepa Rastogi	40
Women at the Centre: A Study of Diaspora Literature Dr. Shaikh Parvez Aslam	33
Economic Marginality of Women is Closely Related to female crime Almas Mohd. Ishaque Hannure	
Educating Women - Issues and Challenges Shaikh Nusrat Sultana Dr. Mehruunnisa Pathan	42
Lit. Criticism of Shakespeare's Famous Navel Plays Dr. Jyoti Dhariadhikari	49
Feminine Concern in Harriet Muller's <i>The Land of Green Plums</i> Ms. Shilpa Shivajirao Chavan	52
Female Protagonist in Shakespeare's <i>Timon of Athens</i> Dr. Jyoti Dhariadhikari	52
Women's Stereotypes and Issues at Workplace Dr. Asmita Sharad Salve	60
Gender Discrimination and Violence against Women in Toni Morrison's <i>The Bluest Eye, Beloved and Paradise</i> Dr. Ghausham Dnyaneshwar Jadhav	64
Conflict in Toni Morrison's Fiction Dr. Siddhant Zahedi Szdiq.Hi	67
Women Empowerment and Gender Equality in India Syed Abdul Quader Dr. Shaikh Parvez Aslam	69
Stereotypical Portrayal of Women in Media Vrushali Manohar Londhe	72
Violence as the instrument of Patriarchy in Arundhati Roy's <i>The God of Small Things</i>	
Theme of Death in Shakespeare's Plays Syed Sohel Chand Patel	77
A Study on the Diaspora in Indian English Literature Shaikh Azeem Shaikh Babar Dr Anupama Shekhawat	70
Women Characters in South Asian fiction Shaheda Afreen Akhtar Ali Sayyed	85
A Concern for Marginalisation, Adversity, and Discrimination in Ruskin Bond's Stories	
Women's Empowerment in Shakespeare's <i>Titus Andronicus</i> Dr. Pooja Ramesh Bhargava	85




Principal
 Kalikadevi Arts, Comm. & Sci. College,
 Shirur (Ka.), Dist. Beed.

Portrayal of Women Writer's In Romantic Age Dr. Korde Rajabhau Chhaganrao	92
Portrayal of Women in the Novel <i>Age of Iron</i> j1ohaoiued:tbokedtaddfii	95
A Study of Women Characters in Arun Joshi's <i>The Foreigner</i> Dr. Mujahed-Ur-Rahman	94
Female Predicament in Doris Lessing's Fiction Dr. Pathan P.Y.	100
Partition and Women: An Analysis of Qurratulain Hyder's <i>The Sound of Falling Leaves</i> Dr. Shaikh Suhel S.	102
Educating Women: Issues and Challenges Dr. Waghmare S.S. Mr. Ware S.P.	104
Multiculturalism and Gender equality in Canada Mahajan Pradnya Sahebrao Dr. Suhel S. Shaikh	106
Kahlil Gibran's Vision of Womanhood and Feminist thinking Zarina Deshmukh	108
Mystery Queen Agatha Christie's Contribution To Detective Fiction Dr. Sayed I.G.	111
Depiction of Maryam Jameelah in English Literature Dr. Sbaikb Suhel 3amzd Syed Bushra .Anbeed Raliim	116
Crime and Mystery in Benjamin Blacks' <i>Christine Falls</i> : A Critical Approach Dr. Shaikh Kalimoddin Rashid Mohammed Parvez Shaikh Rasheed	118
Violence against Women in Nayantara Sahgal's <i>Rich Like us</i> Dr. Ashwini Manik Purude	120




Principal

**Kalikadevi Arts, Comm. & Sci. College,
Shirur (Ka.), Dist. Beed.**

THIRD YEAR B. A.
SEMESTER-VI

NEW SYLLABUS
CBCS PATTERN

INTRODUCTION TO HUMAN RIGHTS AND SOCIAL JUSTICE

SOCIOLOGY (G3)

Dr. JYOTI S. GAGANGRAS
VINAYAK S. LASHKAR

Dr. SUDHIR A. YEOLE
VIKRAMADHITYA P. GAIKWAD




Principal

Kalikadevi Arts, Comm. & Sci. College,
Shirur (Ka.), Dist. Beed.

 **NIRALI**
PRAKASHAN
ADVANCEMENT OF KNOWLEDGE

First Edition April 2022

© Authors

The text of this publication or any part thereof should not be reproduced, stored in any form or stored in any retrieval system or device for distribution, including electronic, recording, taping or information retrieval system or otherwise in any form, type, performance, media or other information storage device, without the written permission of Authors with whom the rights are reserved. Breach of this provision shall be legal action.

Every effort has been made to avoid errors or omissions in this publication. In spite of this, errors may have crept in. Any mistake, error or discrepancy noticed and brought to our notice shall be taken care of in the next edition. It is notified that neither the publisher nor the authors or seller shall be responsible for any damage or loss of any kind in any form or any manner whatsoever. The reader must check at the end of each volume with original Government notification or publications.

Published By
NIRALI PRAKASHAN
 Akshayadev Pragni, 1112, Shivaj Nagar,
 Off. J.A. Road, Pune - 411005
 Tel - (020) 25512366/37/38
 Email - niralipune@pragationline.com

Polyploote
YOGIRAJ PRINTERS AND BINDERS
 Survey No. 257A, Ghade Industrial Estate,
 Handed Sam Road
 Handed, Pune - 411005

DISTRIBUTION CENTRES

PUNE

Nirali Prakashan
 (For orders outside Pune)
 S. No. 26/27, Chayani Barcha Road, Near Aash
 College
 Pune 411041, Maharashtra
 Tel: (020) 24880204, Mobile: 9657703143
 Email: bookorder@pragationline.com

Nirali Prakashan
 (For orders within Pune)
 119, Sadashiv Park, Sadashiv Market Lane
 Pune 411002, Maharashtra
 Tel: (020) 2443 2044, Mobile: 9657703143
 Email: niralipune@pragationline.com

MUMBAI

Nirali Prakashan
 Saadhya Co-op. Hsg. Society Ltd., D Wing Ground Floor, 885 S.V.P. Road
 Vilepar, Mumbai 400004, Maharashtra
 Mobile: 7049621020, Tel: (022) 285 6285 / 2386 9876
 Email: niralimumbai@pragationline.com

DISTRIBUTION BRANCHES

DELHI
Nirali Prakashan
 Room No. 2 Ground Floor,
 475/73 Connaught Place, Agarwal
 Build Estate, New Delhi
 110002
 Mobile:
 9511781474/9518421842
 Email: delhi@pragationline.com

BENGALURU
Nirali Prakashan
 Main Ground Floor, Jaya
 Apartments, No. 96, 4th Cross,
 4th Main, Malleshwari,
 Bengaluru, 560002 Karnataka
 Mob: 9686211074
 Email:
 bengaluru@pragationline.com

NAGPUR
Nirali Prakashan
 Above Manisha Market, The
 No. 1, First Floor, Ash Bharti
 Square, Vastubh Nagar,
 480012 (MADR)
 Tel: (0712) 254 7129
 Email:
 nagpur@pragationline.com

KOLKATA
Nirali Prakashan
 426/7, Shree Park, Ground
 Floor,
 Pradip, Opp. Rajpur Taluk,
 Kolkata-700012, Maharashtra
 Tel: 9830211074
 Email:
 kolkata@pragationline.com

JALSAON
Nirali Prakashan
 M. V. V. Market, Near
 Park, Jalgaon 425001,
 Maharashtra
 Tel: (0257) 242 0995
 Mob: 94734 91800
 Email:
 jalgaon@pragationline.com

SOLAPUR
Nirali Prakashan
 B-119/2, Aash Nagar, 1st
 Floor, Dabur, Pune Naka, Opp
 Solapur 413002, Maharashtra
 Mobile 9830211074
 Email:
 solapur@pragationline.com



Principal
 Kalikadevi Arts, Comm. & Sci. College,
 Shirur (Ka.), Dist. Beed.

THIRD YEAR B. A.
SEMESTER-V

SOCIOLOGY (G3)

NEW SYLLABUS
CBCS PATTERN

पु. वि. सं. त. त्र्याग ग. आ. ग. प. एस. डी. सुधर अश्रुबा योई

VINAYAK SUBHASH LASHKAR

VIKRAMADITYA P. GAIKWAD



NIRALI
KASHAN
CENTRE OF KNOWLEDGE

Principal

Kalikadevi Arts, Comm. & Sci. College,
Shirur (Ka.), Dist. Beed.

SOCIOLOGY: CRIME AND SOCIETY

ISBN 978-93-5451-206-3

First Edition : December 2021

© : Authors

The text of this publication, or any part thereof, should not be reproduced or transmitted in any form or stored in any computer storage system or device for distribution including photocopy, recording, taping or information retrieval system or reproduced on any disc, tape, perforated media or other information storage device etc. without the written permission of Authors with whom the rights are reserved. Breach of this condition is liable for legal action.

Every effort has been made to avoid errors or omissions in this publication. In spite of this, errors may have crept in. Any mistake, error or discrepancy so noted and shall be brought to our notice shall be taken care of in the next edition. It is notified that neither the publisher nor the authors or seller shall be responsible for any damage or loss of action to any one, of any kind, in any manner, therefrom. The reader must cross check all the facts and contents with original Government notification or publications.

Published By :
NIRALI PRAKASHAN
Abhyudaya Pragati, 1312, Shivaji Nagar,
Off J.M. Road, Pune - 411005
Tel - (020) 25512336/37/39
Email : niralipune@pragationline.com

YOGIRAJ PRINTERS AND BINDERS
Polyplate
Survey No. 10/1A, Ghule Industrial Estate
Nanded Gaon Road
Nanded, Pune - 411041

DISTRIBUTION CENTRES**PUNE**

Nirali Prakashan
(For orders outside Pune)
S. No. 28/27, Dhayari Narhe Road, Near Asian
College, Pune 411041, Maharashtra
Tel : (020) 24690204; Mobile : 9657703143
Email : bookorder@pragationline.com

Nirali Prakashan
(For orders within Pune)
119, Budhwar Peth, Jogeshwan Mandir Lane
Pune 411002, Maharashtra
Tel : (020) 2445 2044; Mobile : 9657703143
Email : niralifocal@pragationline.com

MUMBAI

Nirali Prakashan
Rasdharma Co-op. Hsg. Society Ltd., 'D' Wing Ground Floor, 385 S.V.P. Road Girgaum, Mumbai
400004, Maharashtra Mobile : 7045821020; Tel : (022) 2385 5339 / 2386 9976
Email : niralimumbai@pragationline.com

DISTRIBUTION BRANCHES**DELHI**

Nirali Prakashan
Room No. 2 Ground Floor
4575/15 Omkar Tower,
Agarwal Road Darya Ganj,
New Delhi 110002
Mobile : 9555778814/
9818561840
Email : delhi@niralibooks.com

KOLHAPUR

Nirali Prakashan
438/2, Bhosale Plaza, Ground
Floor, Khatbag, Opp.
Balgopal Talim,
Kolhapur 416 012,
Maharashtra
Mob : 9850046155

BENGALURU

Nirali Prakashan
Maitri Ground Floor, Jiya
Apartments, No. 99, 5th Cross,
5th Main, Malleswaram,
Bengaluru 560003 Karnataka
Mob : 9686821074
Email :
bengaluru@niralibooks.com

JALGAON

Nirali Prakashan
34, V. V. Golani Market, Navi
Peth, Jalgaon 425001,
Maharashtra
Tel : (0257) 222 0395
Mob : 94234 91860
Email :
jalgaon@niralibooks.com

NAGPUR

Nirali Prakashan
Above Maratha Mandir,
Shop No. 3, First Floor, Ran
Jharshi Square, Sitabuldi
Nagpur 440012 (MAH)
Tel : (0712) 254 7129
Email :
nagpur@niralibooks.com

SOLAPUR

Nirali Prakashan
R-158/2, Avanti Nagar, Near
Golden Gate, Pune Naka
Chowk, Solapur 413001,
Maharashtra
Mobile 9890918687
Email :



Marketing@pragationline.com | www.p

Also find us on www.facebook.com

Principal

Kalikadevi Arts, Comm. & Sci. College,
Shirur (Ka.), Dist. Beed.

टी. वाय. बी. ए.
सेमिस्टर-६

नवीन अभ्यासक्रम
सी.बी.सी.एस. पॅटर्न

मानवी हक्क आणि सामाजिक न्यायाचा परिचय

समाजशास्त्र (G-3)

डॉ. सुधीर आश्रुबा येवले
विनायक सुभाष लष्कर

डॉ. ज्योती सुहास गगनबास
विक्रमादित्य प्रभाकर मायकवाड




Principal
Kalikadevi Arts, Comm. & Sci. College,
Shirur (Ka.), Dist. Beed.

 **NIRALI**
PRAKASHAN
ADVANCEMENT OF KNOWLEDGE

प्रथम आवृत्ती : एप्रिल 2022

© : डॉ. सुधीर आश्रुबा येवले, डॉ. ज्योती सुहास गगनप्रास,
विनायक सुभाष लष्कर, विक्रमादित्य प्रभाकर गायकवाड

The text of this publication, or any part thereof, should not be reproduced or transmitted in any form or stored in any computer storage system or device for distribution including photocopy, recording, taping or information retrieval system or reproduced on any disc, tape, perforated media or other information storage device etc. without the written permission of Authors with whom the rights are reserved. Breach of this condition is liable for legal action.

Every effort has been made to avoid errors or omissions in this publication. In spite of this, errors may have crept in. Any mistake, error or discrepancy so noted and shall be brought to our notice shall be taken care of in the next edition. It is notified that neither the publisher nor the authors or writer shall be responsible for any damage or loss of action to any one, of any kind, in any manner, therefrom. The reader must cross check all the facts and contents with original Government notification or publications.

प्रकाशक

निराली प्रकाशन

अभ्युदय प्रवासी, १३१२, शिवाजीनगर,
जंगली मार्यादा रोड, पुणे ४११ ००५
फोन : (०२०) २५५१ २३३६/३७/३९
Email: niralipune@pragationline.com

(Poly Plates)

योगिराज प्रिंटर्स अँड बाइंडर्स

सर्वे नं. १०/१, पुणे इंडस्ट्रियल इस्टेट,
नवड माध राट, ता. शिवाजी,
पुणे ४११ ०४३

गुद्रक

प्रमुख वितरण केंद्रे

पुणे (For orders within Pune)

११९, बुधवार पेठ, जोगेश्वरी मंदिर मार्ग,
पुणे ४११ ००२,
☎ (०२०) २४४५ २०४४ मो. ९६५७७०३१४५
Email: nirallocal@pragationline.com

घायरी (पुणे) (For orders outside Pune)

सर्वे नं. २८/२७, घायरी-नवे रोड, राशिपन
कलिंगनवळ, घायरी, पुणे ४११ ०४१,
☎ (०२०) २४६९ ०२०४ मो. ९६५७७०३१४३
Email: bookorder@pragationline.com

मुंबई

३८५, एस्.व्ही.पी. मार्ग, रश्मिघारा को. ऑफ. कार्टासिंग सोसायटी लि., (D wing Ground floor) गिरगाव,
मुंबई ४०० ००४. ☎ (०२२) २३८५ ६३३९/२३८६ ९९७६ मो. ७०४५८२१०२० Email: mumbai@niralibooks.com

वितरक शाखा

वागपूर

लोकेशन कमर्शियल कॉम्प्लेक्स,
इकॉन नं. ३, सोलापूर,
नागपूर ४१० ०१२. ☎ (०७१२) २५४७ १२९
Email: nagpur@niralibooks.com

जळगाव

३१, व्ही. व्ही. गोलाणी मार्केट, नवी पेठ,
जळगाव ४२५ ००१,
☎ (०२५७) २२२ ०३९५/१. ९४२३४९१८६०
Email: jalgaon@niralibooks.com

कोल्हापूर

४३८/२, भोसले प्लाझा, साउथ प्लॉअर
व्यासबाग, बालगोपाल तानोमसमोर,
कोल्हापूर ४१६ ०१२. मो. ९८५० ०४६ १५५
Email: kolhapur@niralibooks.com

सोलापूर

R-१५८/२, सुवर्तानगर, गोल्डन गेटनवळ,
पुणे - नाको चौक,
सोलापूर ४१३००१ मो. ९८९०९१८६८७
Email: solapur@niralibooks.com

पुस्तक मिळण्याचे ठिकाण

प्रगती बुक सेंटर : पुणे : Email: pbcpune@pragationline.com

१५७, बुधवार पेठ, रत्न टाकिजसमोर, पुणे २. मो. ९६५७७०३१४५

३७६/ब, बुधवार पेठ, जोगेश्वरी मंदिरासमोर, पुणे २. मो. ९६५७७०३१४७

२५२, बुधवार पेठ, जोगेश्वरी मंदिरासमोर, पुणे २. ☎ ८०८७६९१७९५

प्रगती बुक कॉर्नर : मुंबई : Email: pbcmumbai@pragationline.com

शांभू नं. १, शारदाश्रम सोसायटीसमोर, भवान

२२) २४२२३५२६



Principal

Kalikadevi Arts, Comm. & Sci. College,
Shirur (Ka.), Dist. Beed.